

PD2CAEPIPE™- Plant Design-to-CAEPIPE Interface (forCATIA)

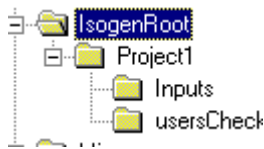
1.0 Installing Program

To install PD2CAEPIPE on Windows NT, load the product CD supplied by InfoPlant and execute the followings steps:

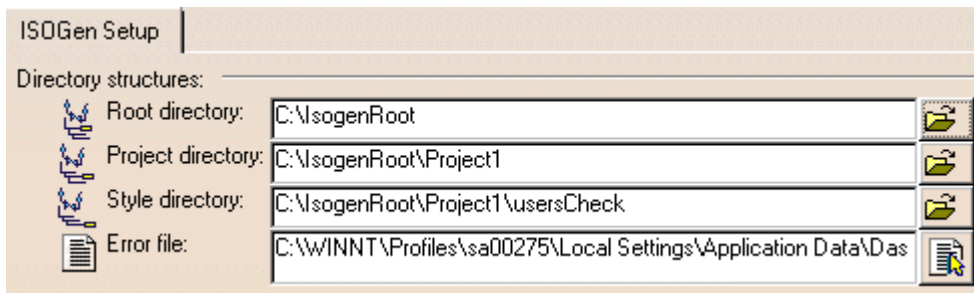
- 1.1 Browse the CD, and run the program "SETUP.EXE" and follow the instructions as they appear on the screen.


2.0 PCF File Extraction

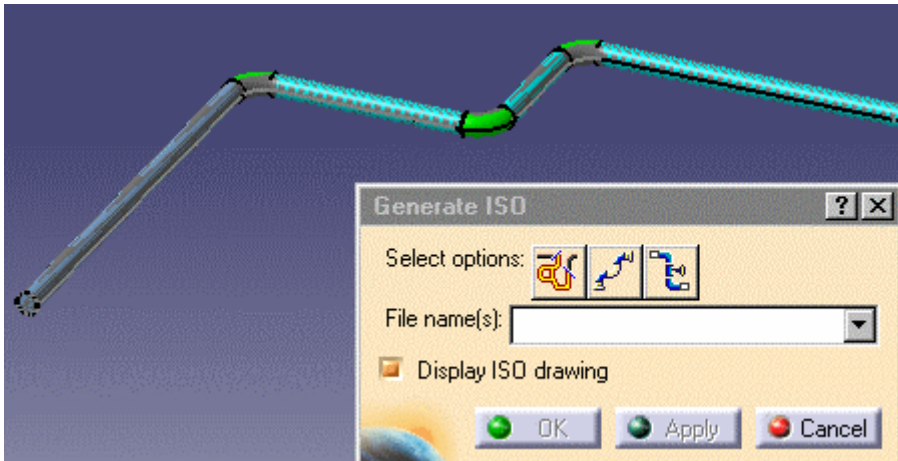
- 2.1 You need to create certain directories, with a specific structure, that will be used by the process. You can give then any name you want. There should be a root directory, in this illustration it is called IsogenRoot. Within this directory there should be a second directory, in this example Project1. Within the second directory there should be a third directory, called usersCheck in this example. In addition, you must create a directory within the second directory called Inputs (the generated PCF file will reside in this directory). When you are done you should have this structure:




- 2.2 In Piping Design click Tools - Options, select Equipment & Systems - Piping Design and the ISOGen Setup tab. If you are doing this for the first time there will be no entries in the fields Root, Project and Style directory. Navigate to the directories you just created, in the first three fields, as shown below. You do not need to enter anything in the Error File field.





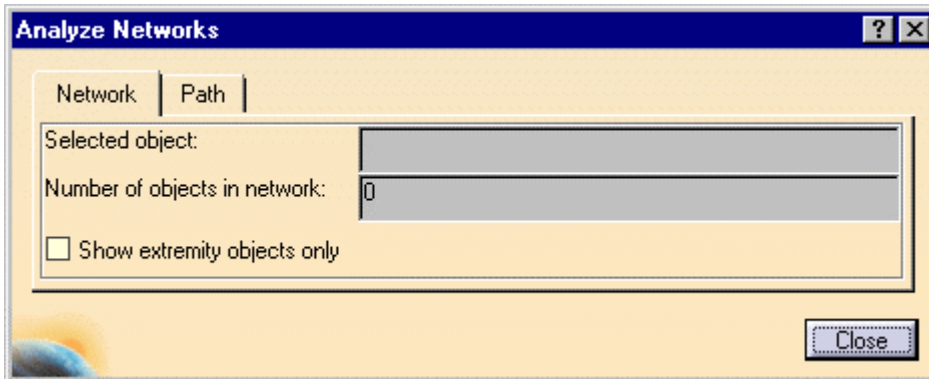
- 2.3 With your document open click the Generate ISO button . The Generate ISO dialog box displays.



2.4 The select options buttons allow you to select what you want to convert.

2.5 Click the Select Line IDs button  to select by line ID. When you click this button a dialog box will display all line IDs available to you, from which you can make your selection. Everything belonging to the line ID will be converted.

2.6 Click the Select Spool button  button to select by spool. When you click this button all spools available to you will be displayed. Select one or more. Everything belonging to the spool(s) will be converted. 4. Click the Select Elements button  to select a range. When you click this button the Analyze Networks dialog box will display.



2.7 A file with the .pcf extension will be generated and stored in the directory ...IsogenRoot Project1 Inputs. You can view the file using a text editor.