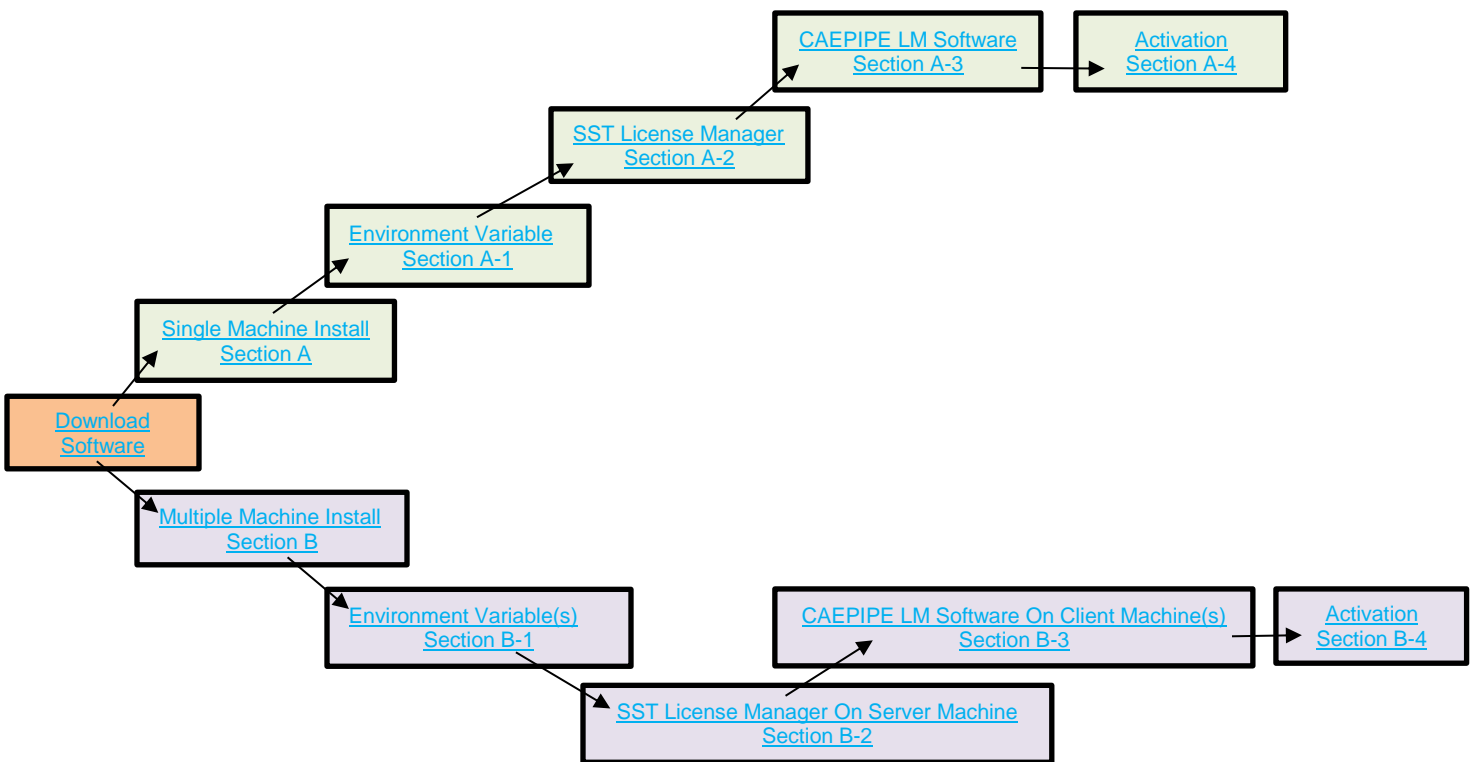


## Installation Instructions for CAEPIPE LM Software

Thank you for downloading software from sstusa.com. Please carefully review and follow all instructions.

**IMPORTANT NOTE:** SST software mentioned in the installation instruction below requires [.NET Framework 3.5](#). In Windows 10 and Windows Server R12, please verify that [.NET Framework 3.5](#) is enabled in the “[Turn Microsoft features on or off](#)” options setting. For Windows 7 and Windows 8, [.NET Framework 3.5](#) is already installed by default.

Here’s a basic outline of both installations and their requirements.



If you plan on using only one machine for the entire installation, please proceed to [Section A – Single Machine Installation Instructions](#).

If you plan on using multiple, network connected machines, please proceed to [Section B – Network/Multiple Machine Installation Instructions](#).

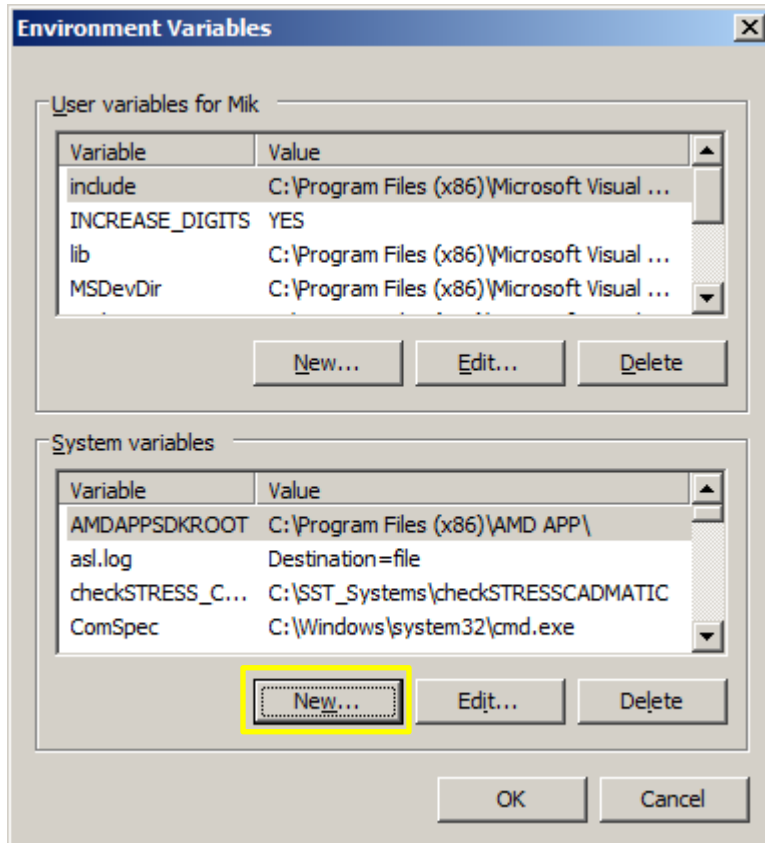
## Section A: Single Machine Installation Instructions

### A-1. Create Environment Variable

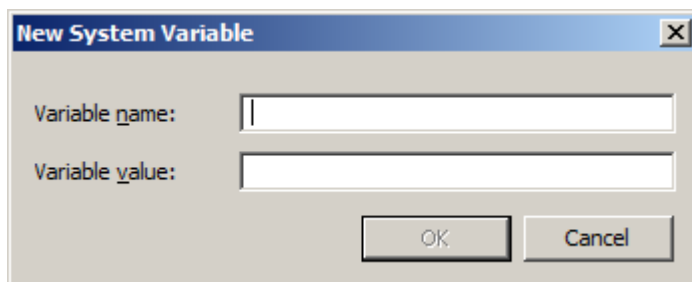
#### SKIPIP Environment Variable

Identify the machine(s) where SST License manager and CAEPIPE LM will be installed. Create the following Environment variable on your machine(s).

- Open Windows Control Panel>System>Advanced Tab.
- Click on Environment Variables.
- Click New from the System variables window (bottom section).



- This dialogue box will appear.



- Enter the following in the appropriate fields.

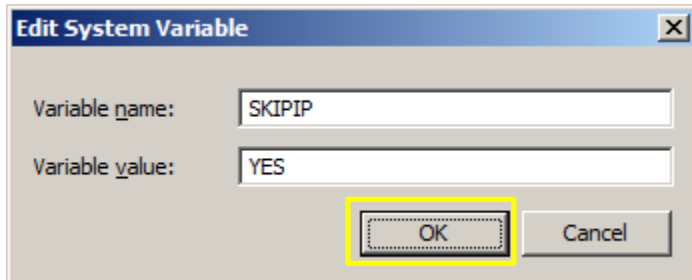
Variable name: **SKIPIP**

Variable value: **YES**

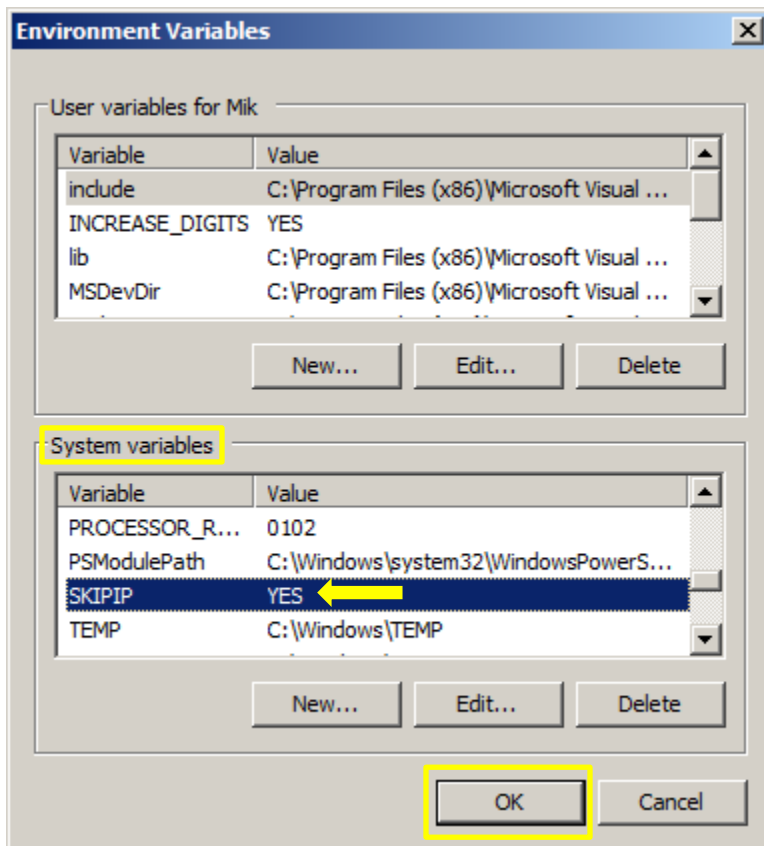
Make sure to use only **CAPITAL** letters (as shown above) when inputting the Variable name and its value.

**DO NOT** make duplicate entry of any Environment Variable as it will block your software from working correctly.

- Click **OK** on the System Variable dialog box to add the Variable.



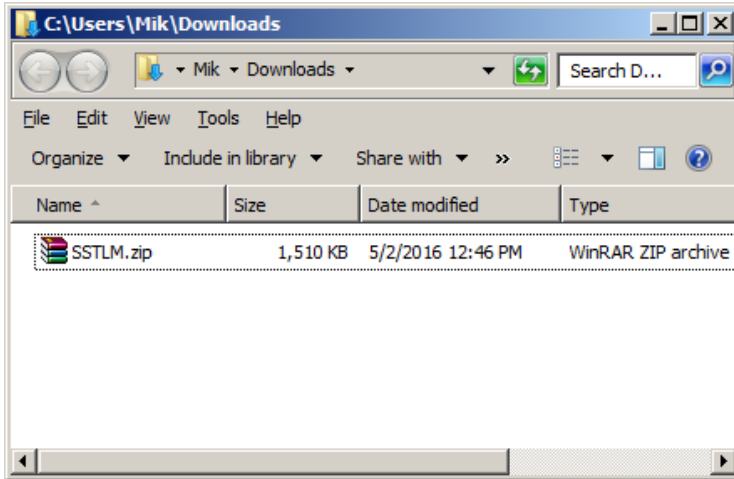
- Your settings should look similar to ones in the image below.
- Click **OK** at the bottom to exit the Environment Variables settings window and again to exit the Systems Properties window.




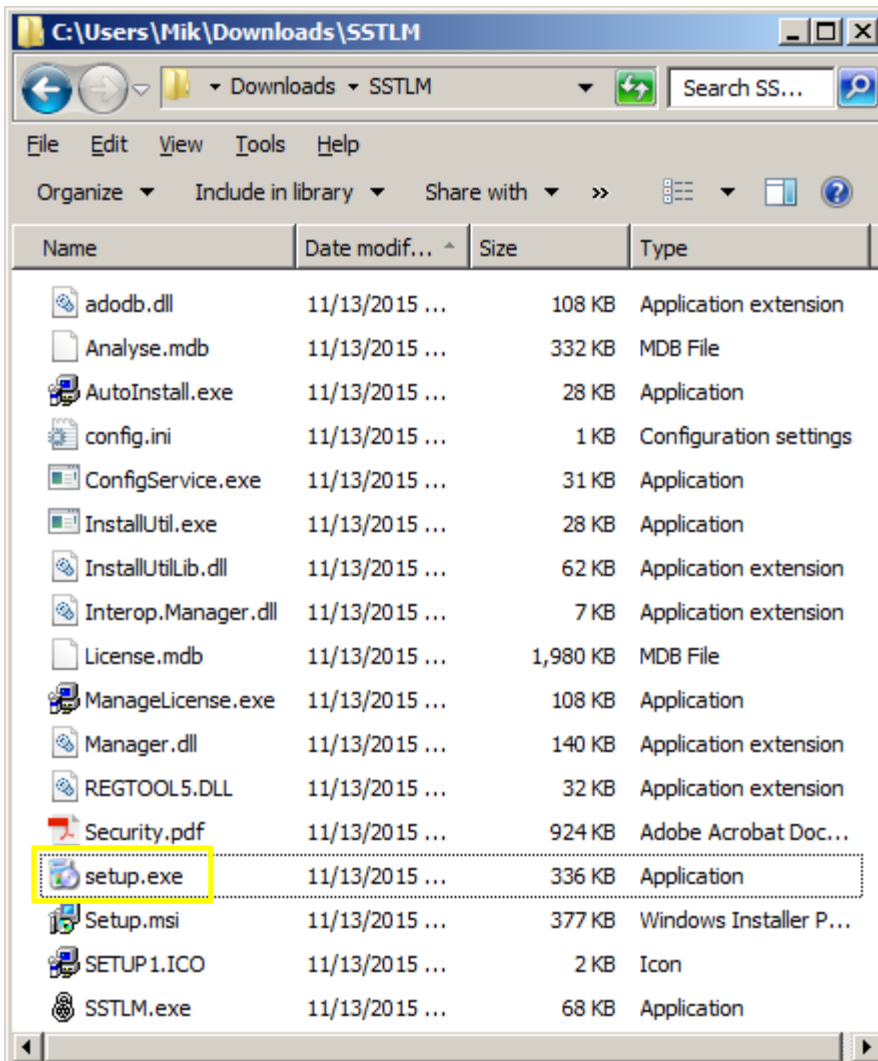
**NOTE: DO NOT** make duplicate entries of any Environment Variable as your CAEPIPE LM may not work.

## A-2. Install SST License Manager

- [Download the SST License Manager \(4 MB\) by clicking anywhere on this sentence.](#)
- The download folder should contain a .zip file name SSTLM.zip (see example below).



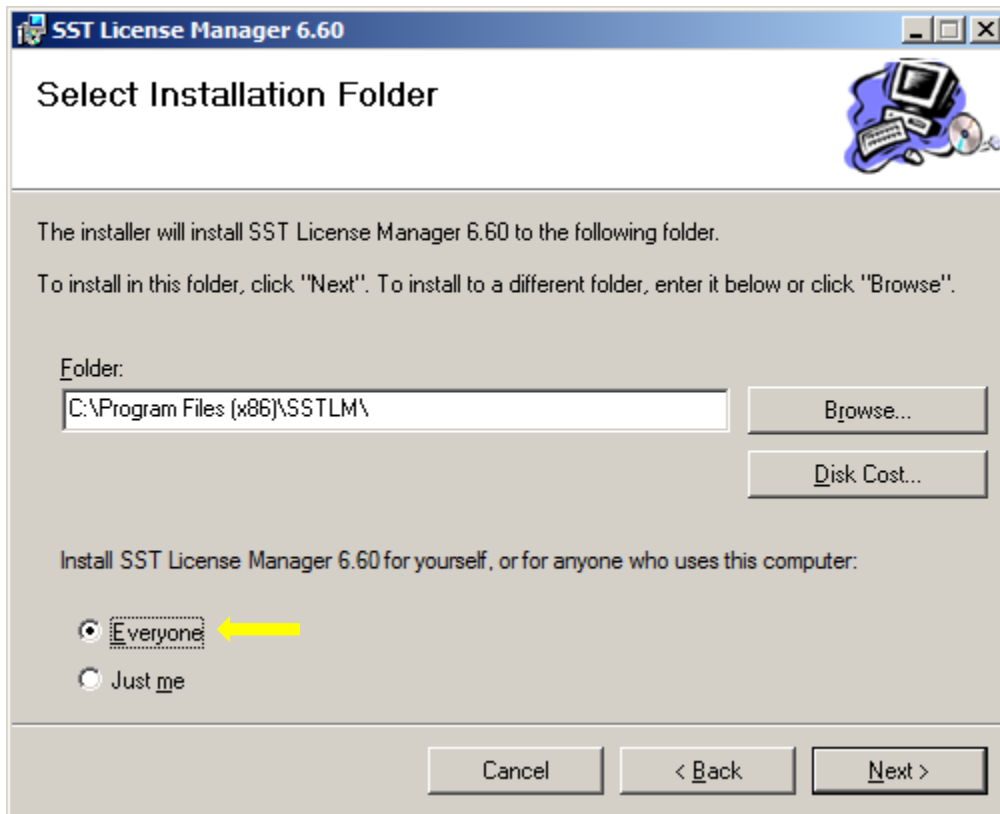
- Unzip the downloaded file. The contents of the folder should look like this.
- Click the  setup.exe icon (found in your unzipped download folder) to open the installation menu.



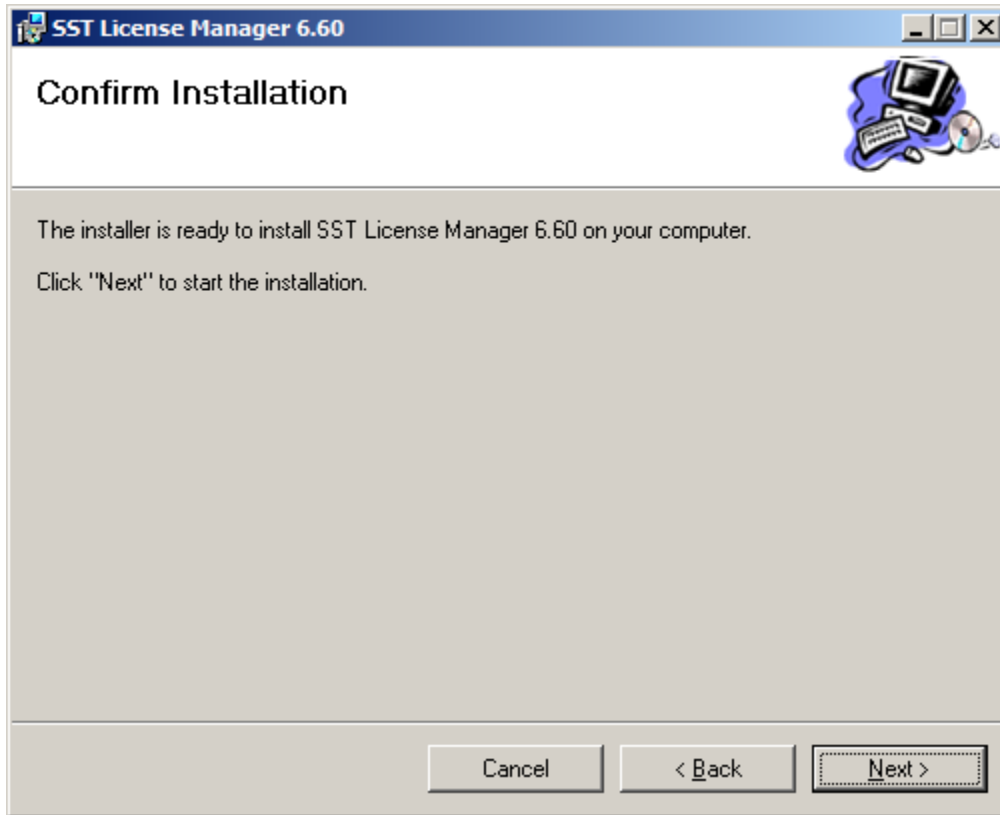
- A dialog window like the one shown below will appear. Click Next to proceed with installation.



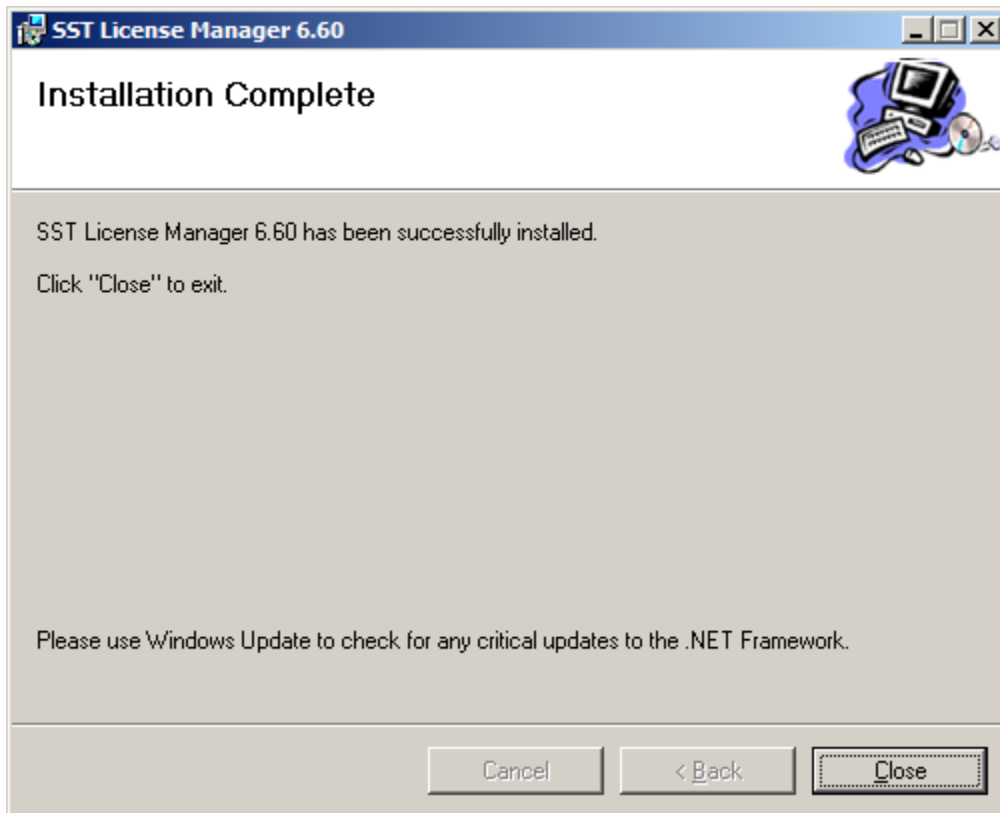
- Change the user access option at the bottom of the next screen from “Just me” to “**Everyone**”. Click Next to select the default installation folder.



- Click Next to confirm installation.

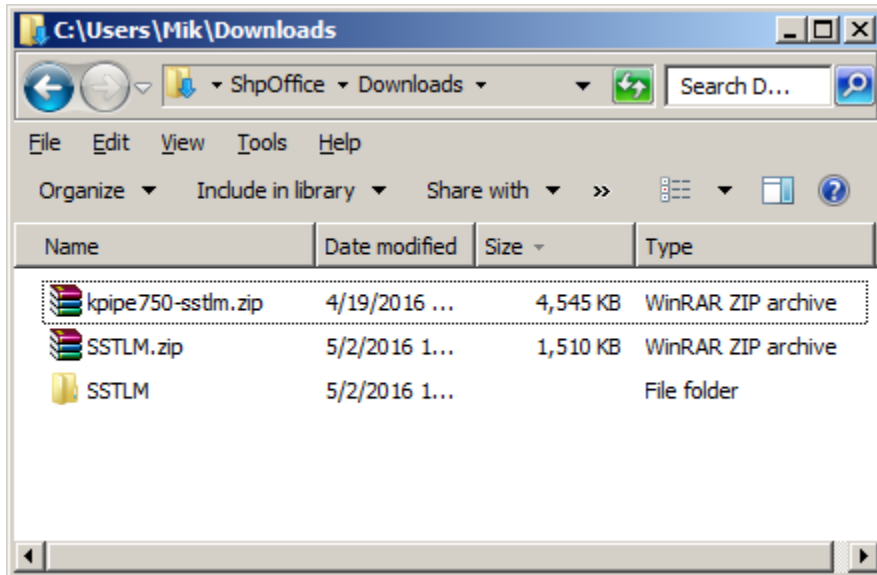


- The SST License Manager is now installed and you may click the Close button to complete the process.

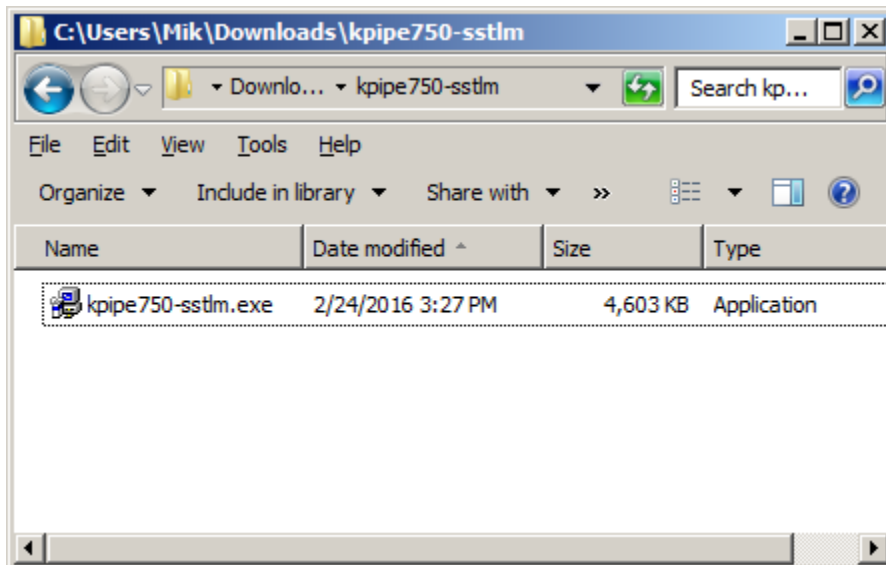


### A-3. Install CAEPIPE LM.

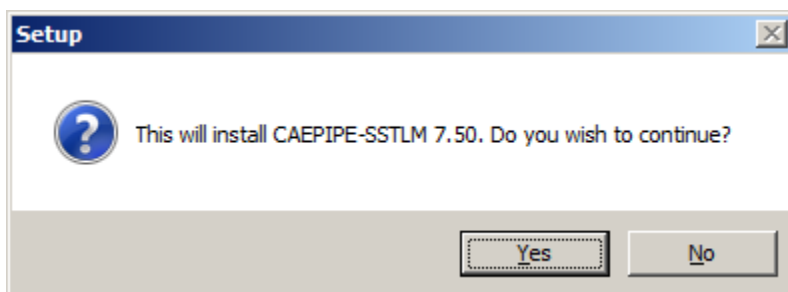
- For CAEPIPE LM installation, refer to the download link provided by email (**kpipe750-sstlm.zip**).
- Once CAEPIPE LM is downloaded, you should have a file that looks like the .zip file in the example below.



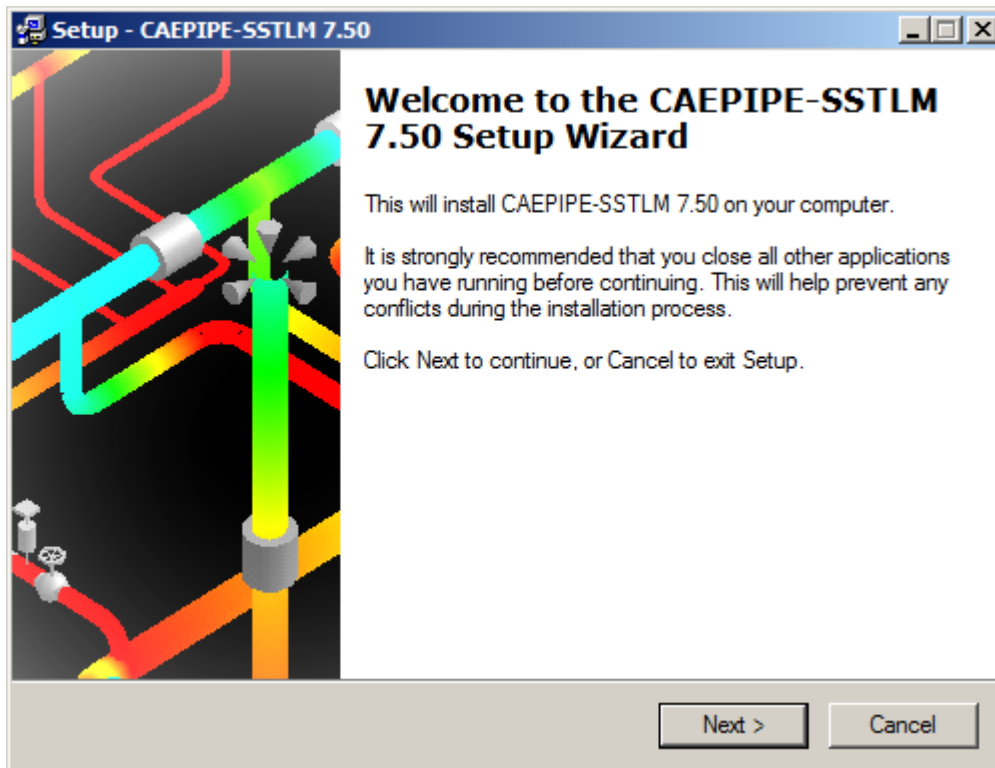
- Unzip the “**kpipe750-sstlm.zip**” file that you downloaded and from within the new folder click the icon to start the **kpipe750-sstlm.exe** installer.



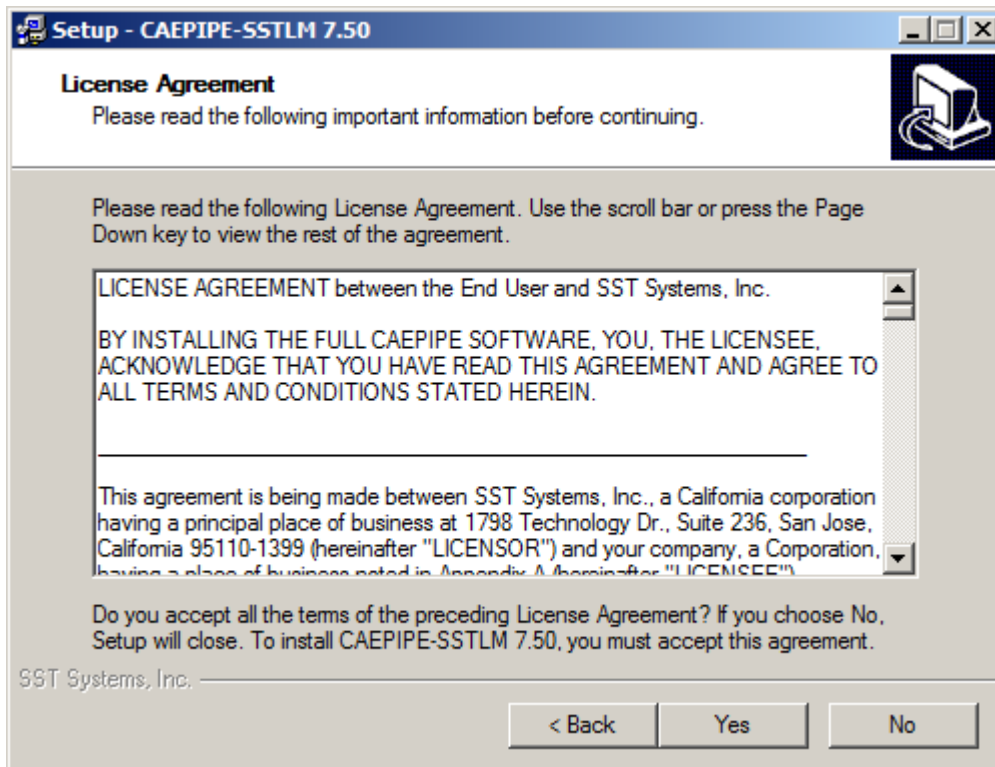
- The dialog window below should appear. Click Yes to proceed.



- The dialogue box below should appear. Click Next to start the installation:

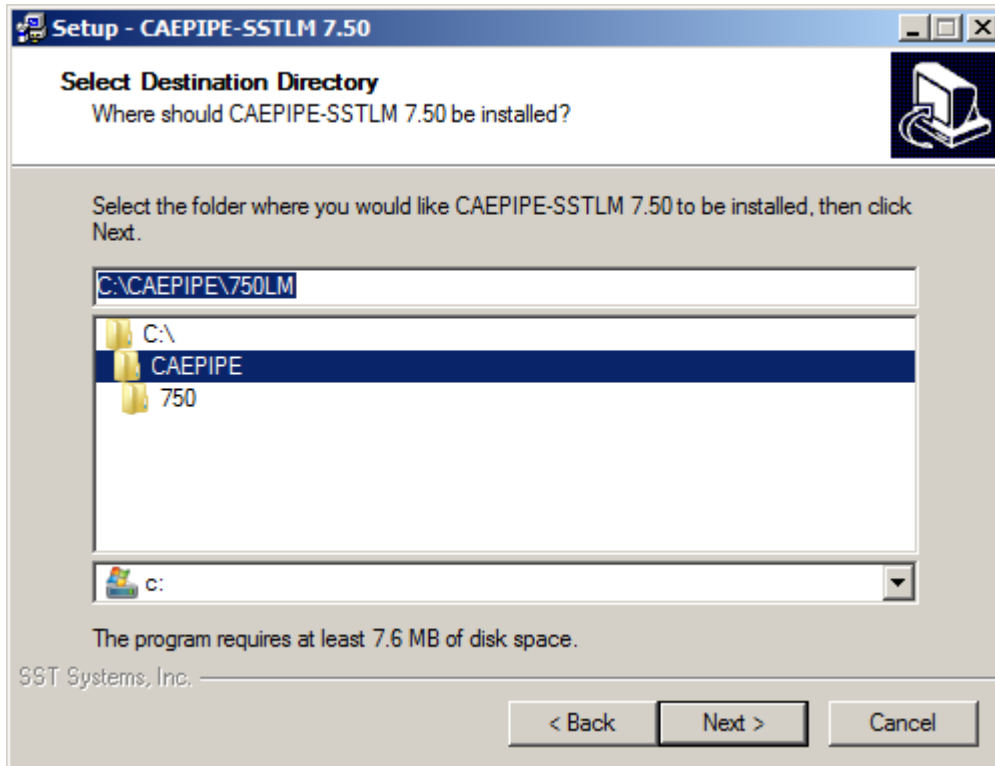


- Click Yes to accept the license agreement and proceed with installation.

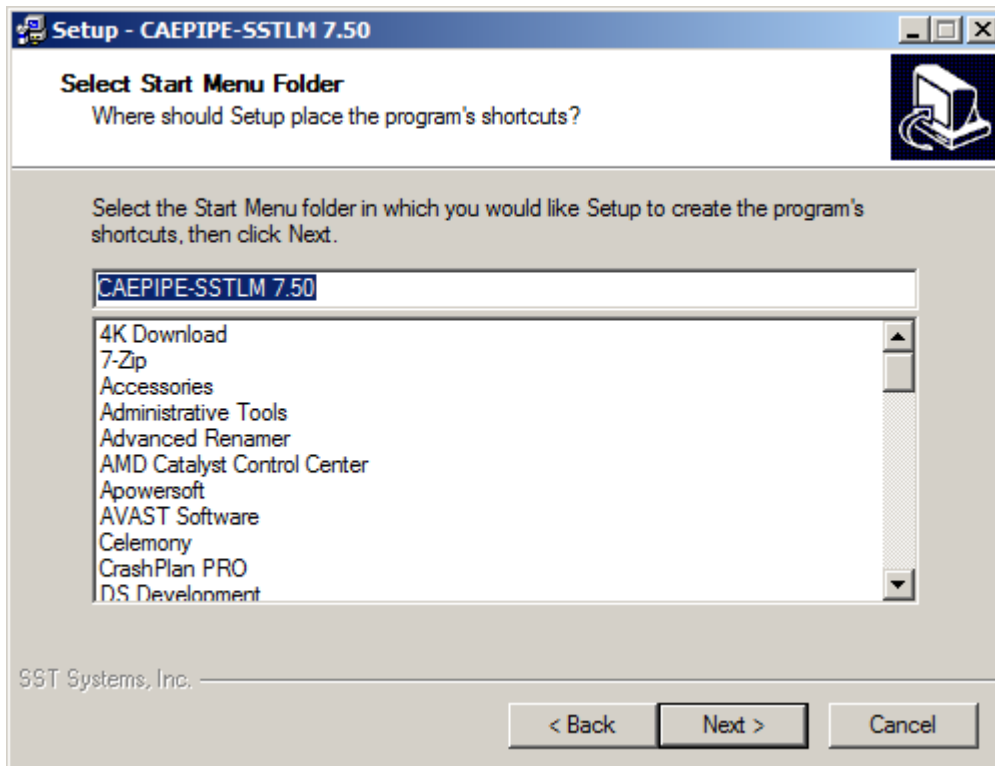




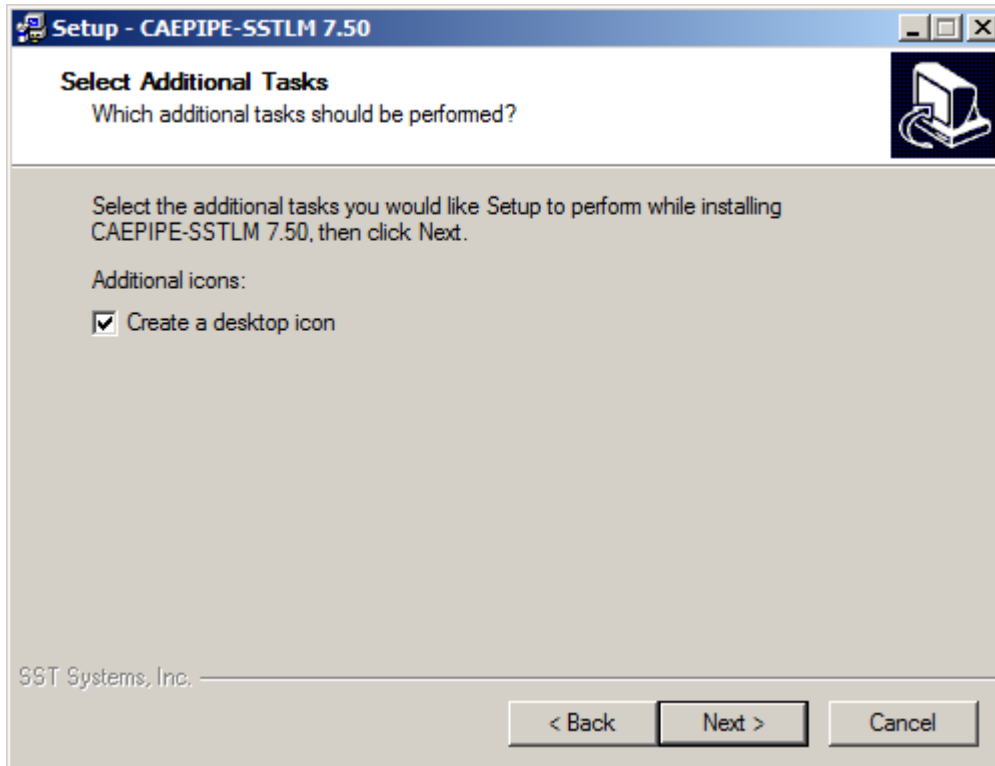
- Click Next to select default installation folder shown.



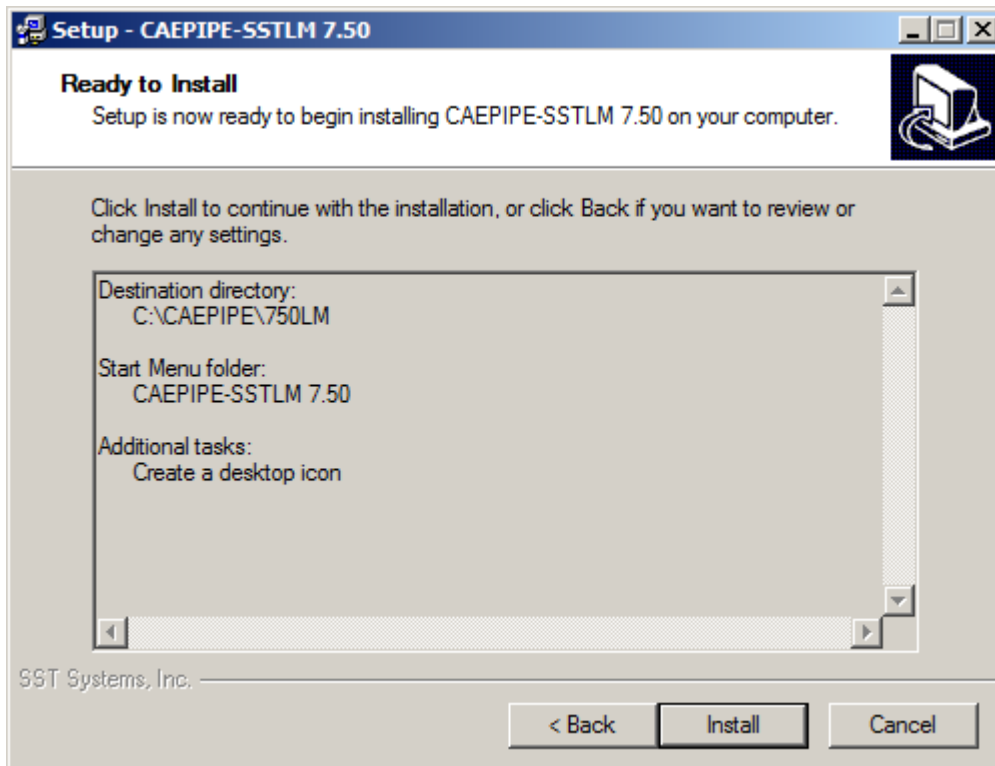
- Click Next to select default Start Menu folder shown.



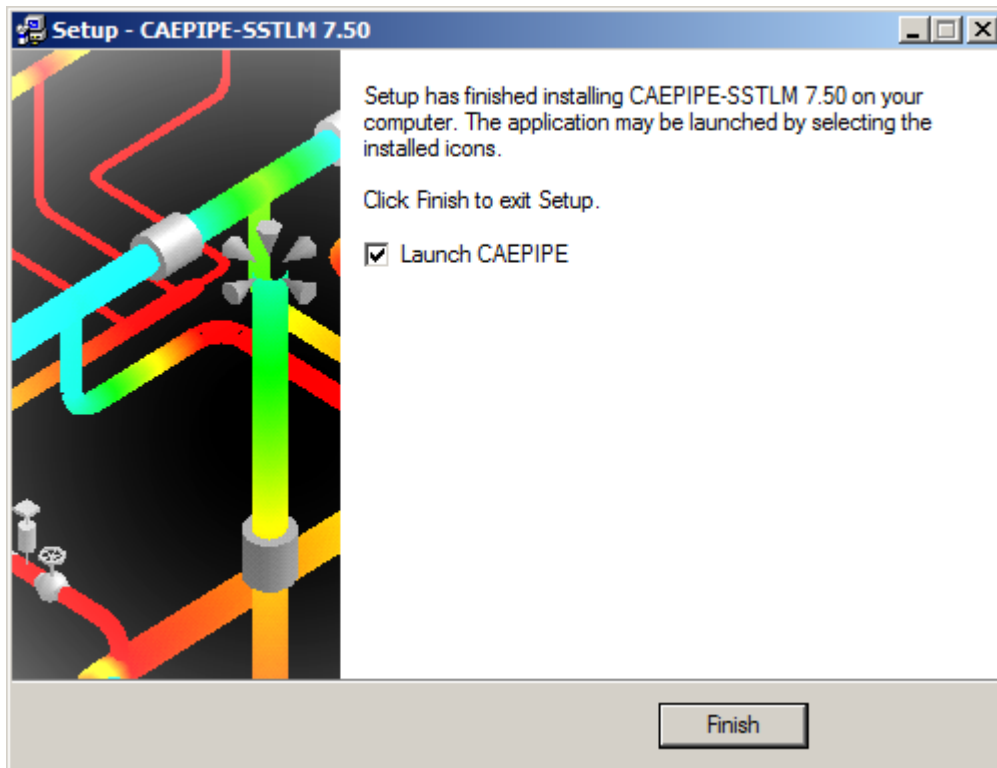
- Click Next to accept default task to create a desktop icon.



- Click Install to start the install process.

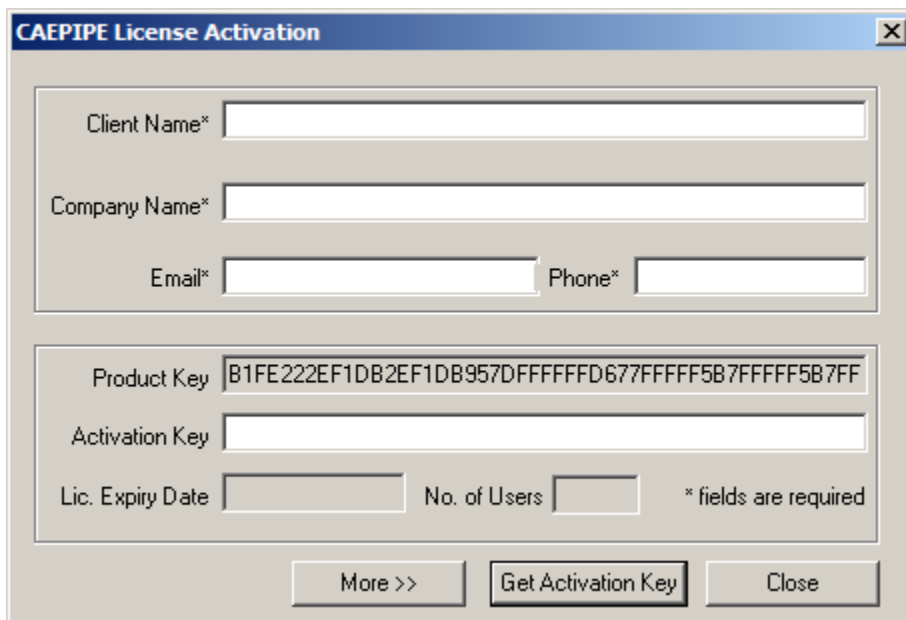


- Click the Finish button to finalize installation and open CAEPIPE LM.



#### A-4. Activate CAEPIPE LM

- If CAEPIPE LM is not open, run/open the installed CAEPIPE LM from your Windows Start menu or installation directory. When you start the CAEPIPE LM, an activation dialog box will open. (An example, "CAEPIPE LM" Activation dialog is shown below.)



- Fill out the client information portion at the top of the dialog box. (An example is shown below.)
- Email your request for an Activation Key by clicking on the “More” button and then “Send email” button. Optionally, you may also copy and paste the ENTIRE product key (which is longer than the width of the visible Product Key field) into an email and send it to [support@sstusa.com](mailto:support@sstusa.com). If you are located in **India**, please email your information to [sales@sstindia.co.in](mailto:sales@sstindia.co.in).

- **You will receive an Activation Key by email** to the email address entered in the client information area.
- Once the Activation Key from SST is received, launch the CAEPIPE LM again and copy the **ENTIRE** Activation Key into the Activation Key field and click on "Activate Now" (see below).

- Click Close. This completes the activation process and provides full functionality of CAEPIPE LM.

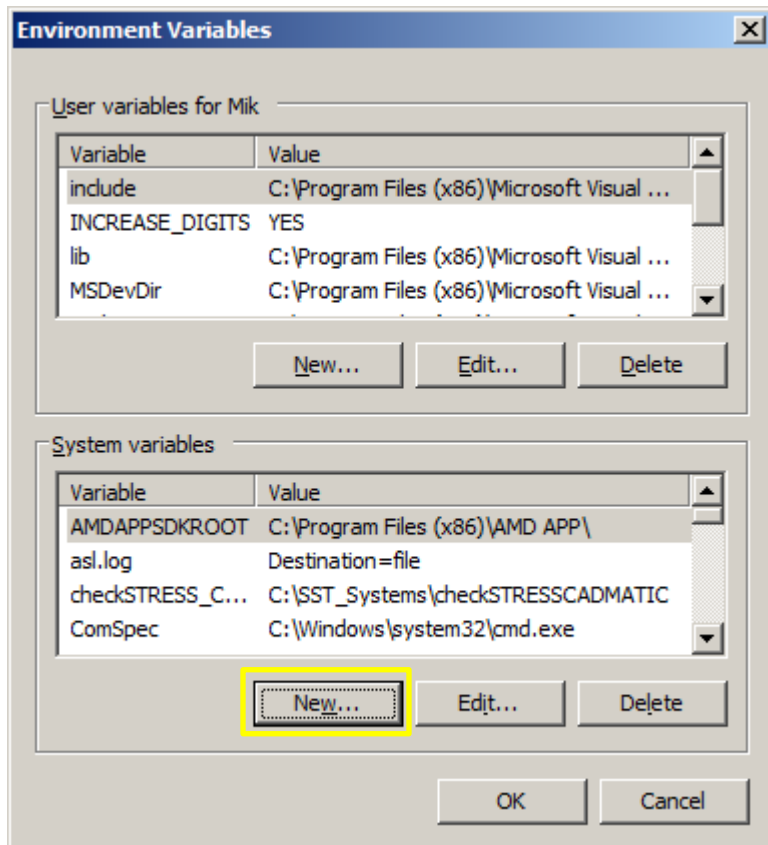
## Section B: Network/Multiple Machine Installation Instructions

### B-1. Create Environment Variables

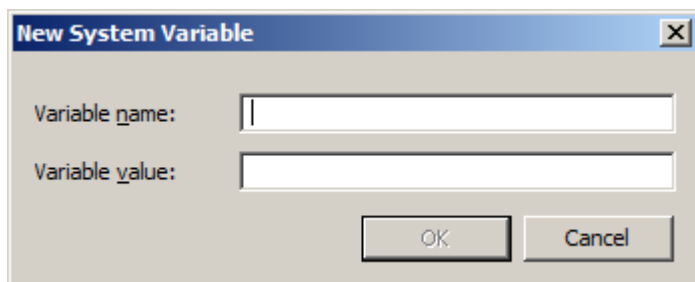
#### **SKIPIP Environment Variable** - on the server machine and all client machines

Identify the machine(s) where SST License manager and CAEPIPE LM will be installed. Create the following Environment variable on all machine(s).

- Open Windows Control Panel>System>Advanced Tab.
- Click on Environment Variables.
- Click New from the System variables window (bottom section).



- This dialogue box will appear.



- Enter the following in the appropriate fields.

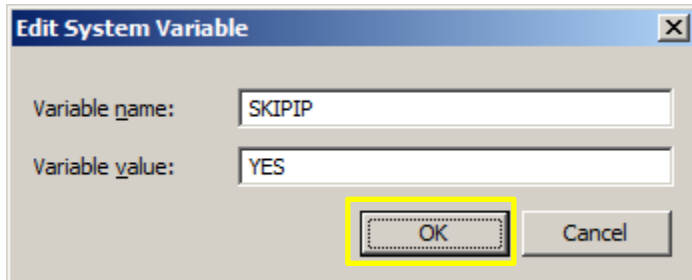
Variable name: **SKIPIP**

Variable value: **YES**

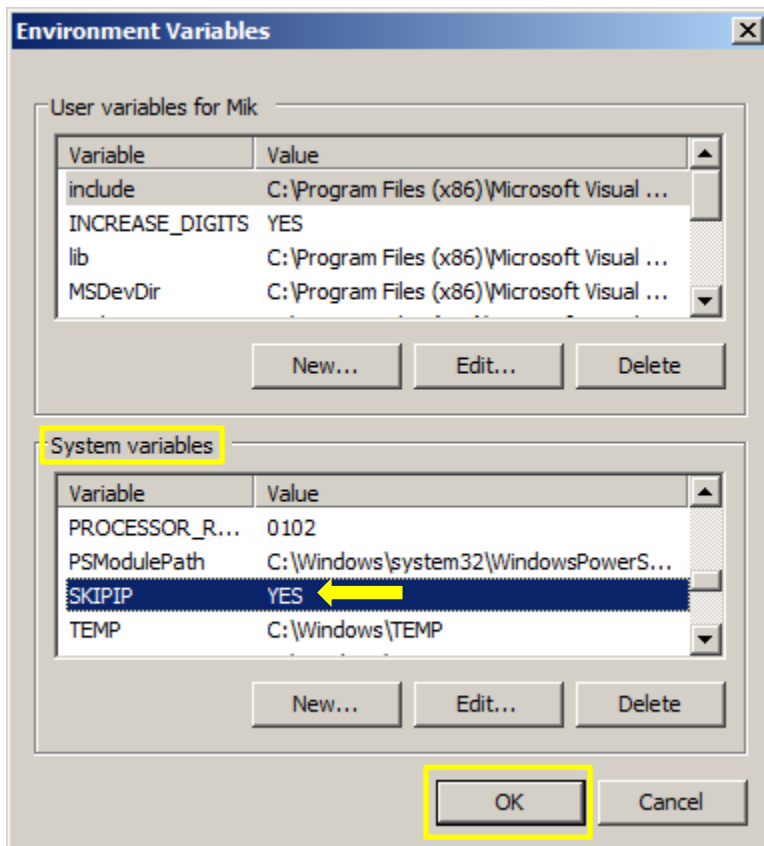
Make sure to use only **CAPITAL** letters (as shown above) when inputting the Variable name and its value.

**DO NOT** make duplicate entry of any Environment Variable as it will block your software from working correctly.

- Click **OK** on the System Variable dialog box to add the Variable.



- Your settings should look similar to ones in the image below.
- Click **OK** at the bottom to exit the Environment Variables settings window and again to exit the Systems Properties window.



- Repeat setting this “SKIPIP Environment Variable” for each machine (both servers and clients).

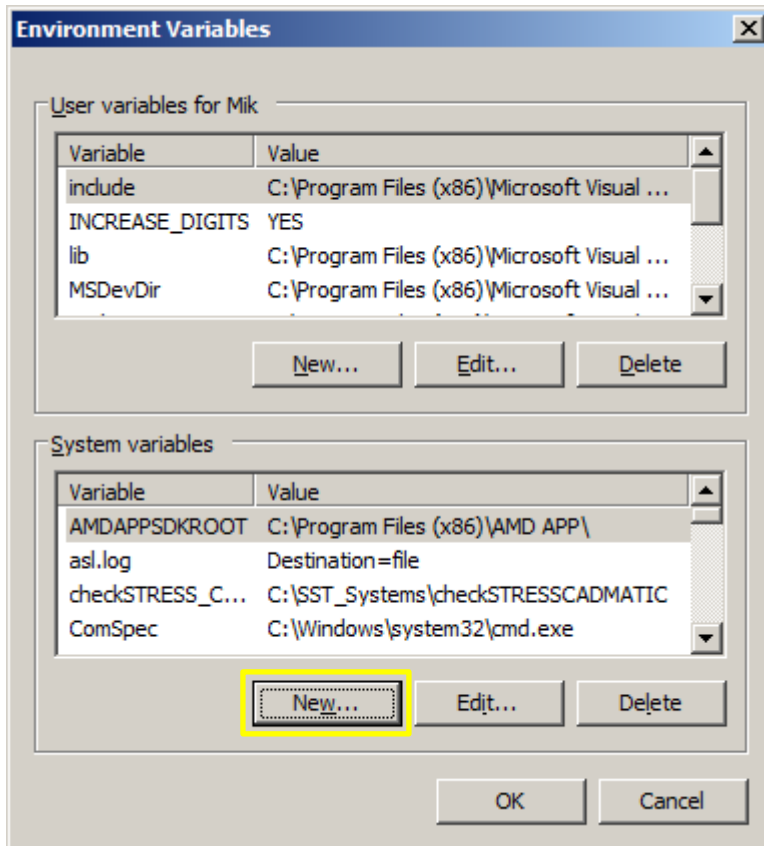
**NOTE: DO NOT** make duplicate entries of any Environment Variable on any one machine as your CAEPIPE LM may not work.

**SSTLM Environment Variable** – on all client machines only (SST License Manager is NOT installed on client machines).

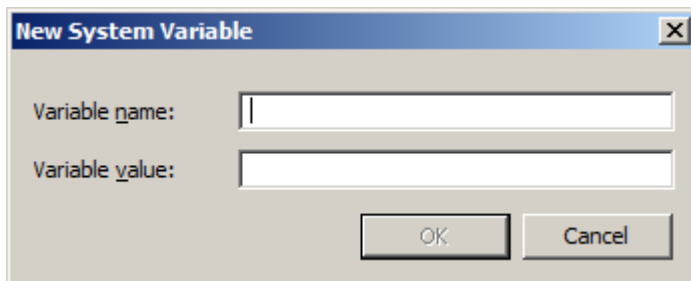
Identify all the **Client** machine(s) where CAEPIPE LM is to be installed ONLY.

Create the following Environment variable on the **CLIENT** machine(s). This will allow CAEPIPE LM to access the license hosted by SST License Manager over your network.

- Open Windows Control Panel>System>Advanced Tab.
- Click on Environment Variables.
- Click New from the System variables window (bottom section).



- This dialogue box will appear.



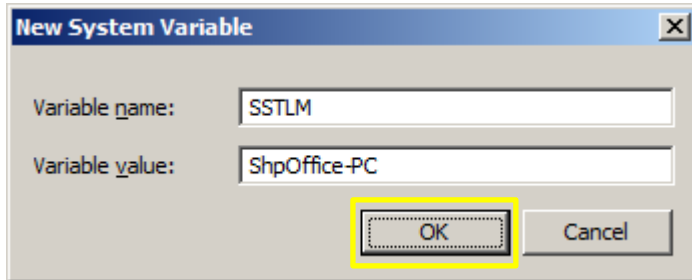
- Enter the following in the appropriate fields.

Variable name: **SSTLM** (Use CAPITAL letters ONLY).

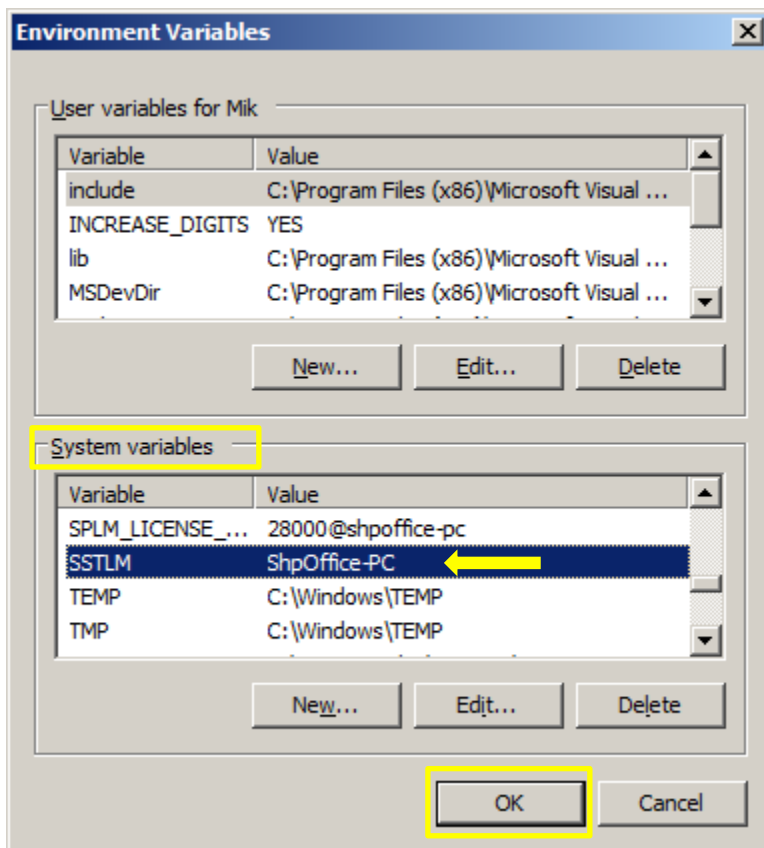
Variable value: **<Computer name>** of server machine where SST License Manager **is** installed (in the example below we entered “**ShpOffice-PC**”).

Make sure that the spelling of the server “Computer name” in the Variable value is exactly as shown on the server machine under Control Panel > System menu, under Computer name, domains, and work group settings. See example in image below.

- Click **OK** on the New System Variable dialog box to add the Variable.



- Your settings should look similar to ones in the image below.
- Click **OK** at the bottom to exit the Environment Variables settings window and again to exit the Systems Properties window.



- Repeat setting this “SKIPIP Environment Variable” for each machine (both servers and clients).

**NOTE: DO NOT** make duplicate entries of any Environment Variable on any one machine as your CAEPIPE LM may not work.

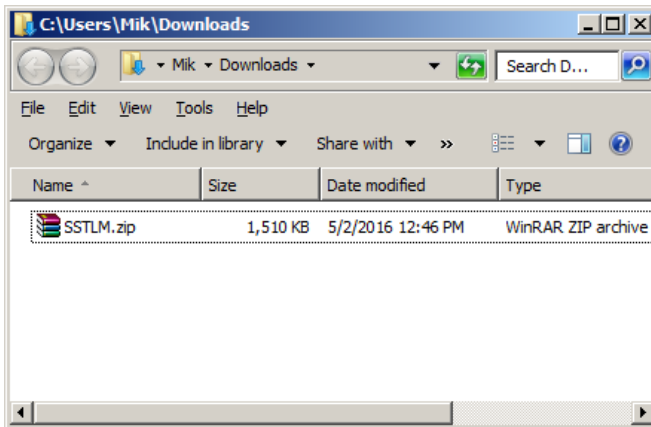



## B-2. Install SST License Manager on the server machine only

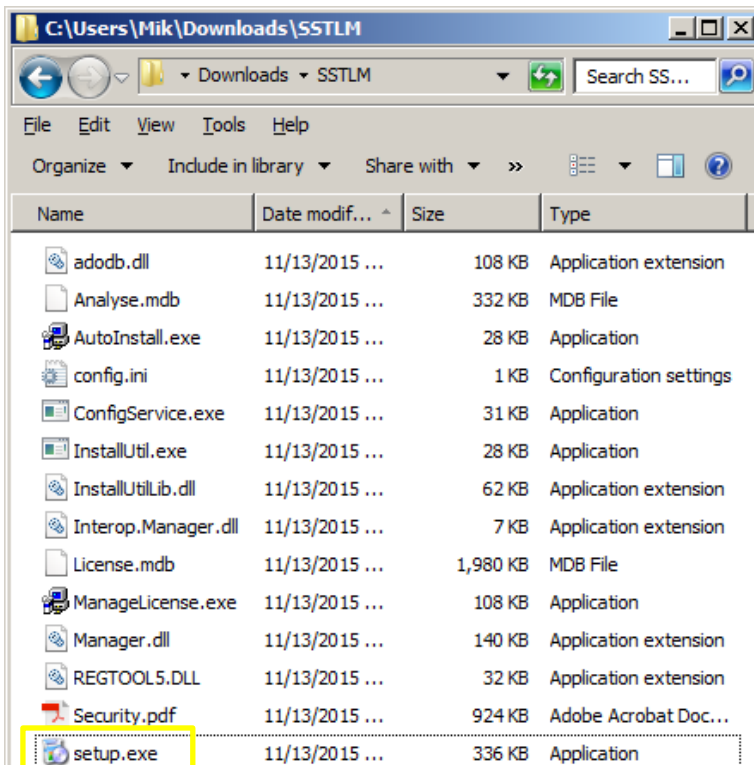
**NOTE:** The SST License Manager software is to be installed only once on the server machine chosen for the specific and permanent purpose of hosting the SSTLM driven client software license which all other client machines in your network will access. Do not repeat the steps described below in " Install SST License Manager" for any machine other than a dedicated server machine.

DO NOT INSTALL SST LICENSE MANAGER ON ANY CLIENT MACHINES.

- [Download the SST License Manager \(4 MB\) by clicking anywhere on this sentence.](#)
- The download folder should contain a .zip file name SSTLM.zip (see example below).



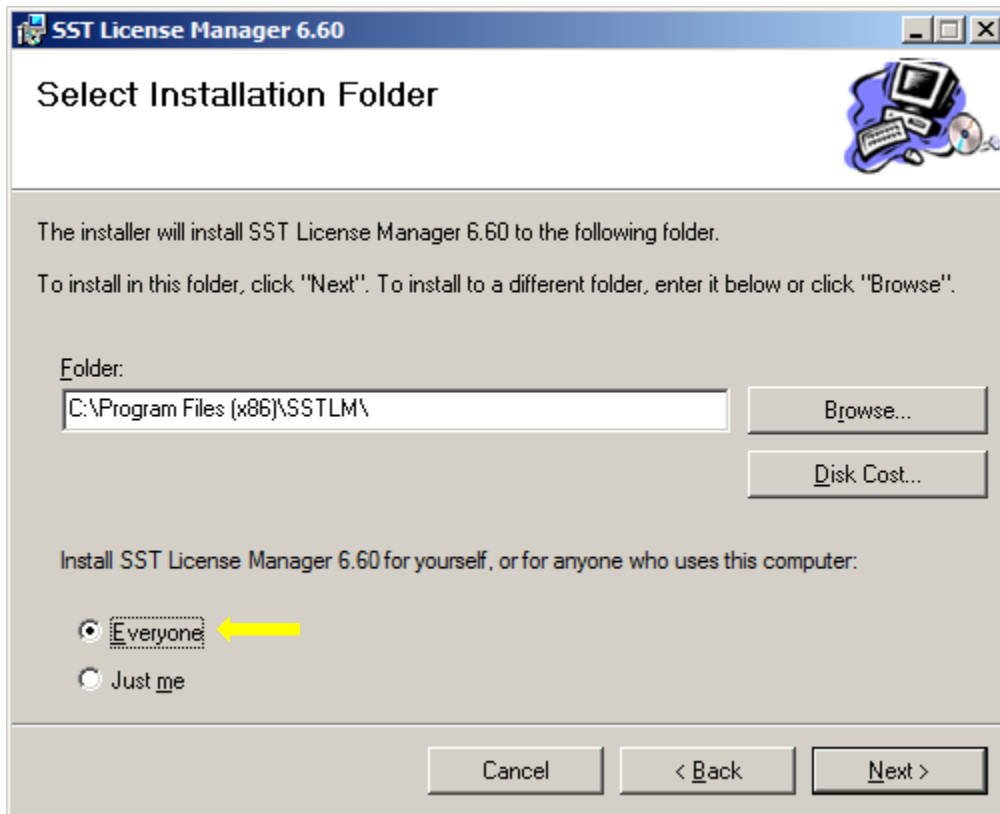
- Unzip the downloaded file. The contents of the folder should look like this. (See example below.)
- Click the  **setup.exe** icon (found in your unzipped download folder) to open the installation menu.



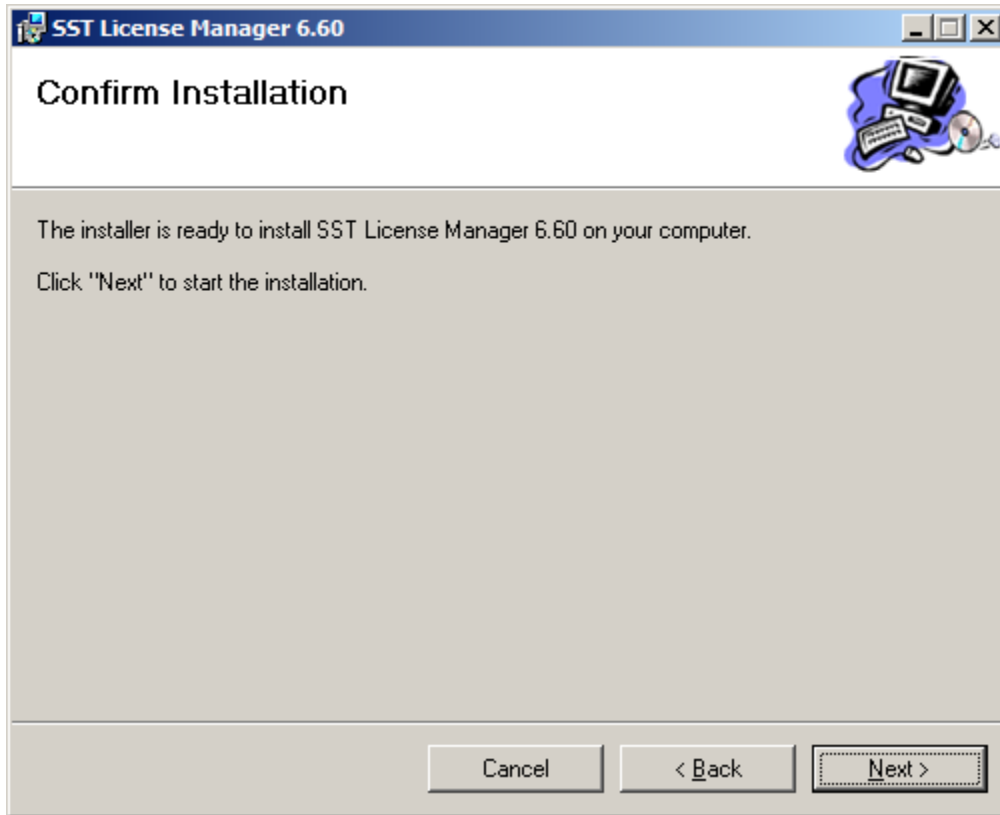
- A dialog window like the one shown below will appear. Click Next to proceed with installation.



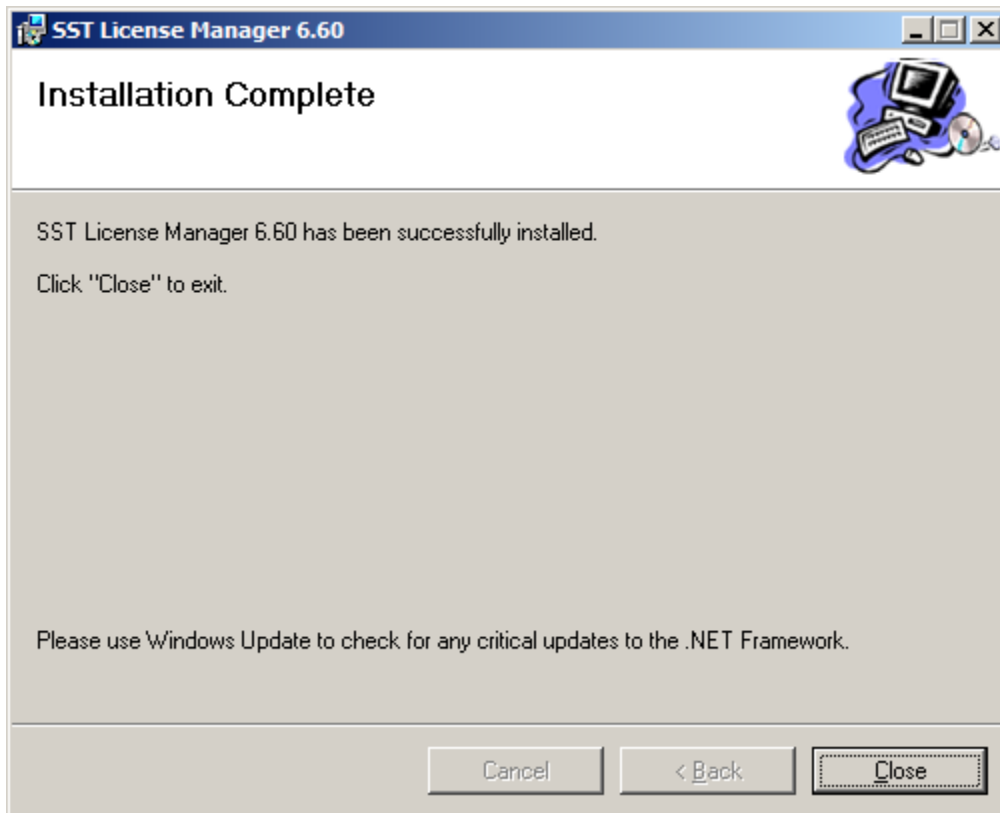
- Change the user access option at the bottom of the next screen from “Just me” to “**Everyone**”. Click Next to select the default installation folder.



- Click Next to confirm installation.



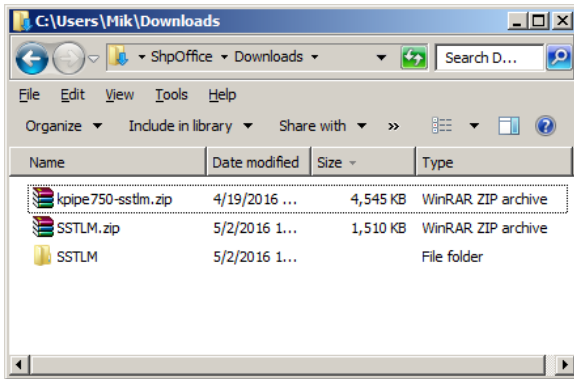
- The SST License Manager is now installed and you may click the Close button to complete the process.




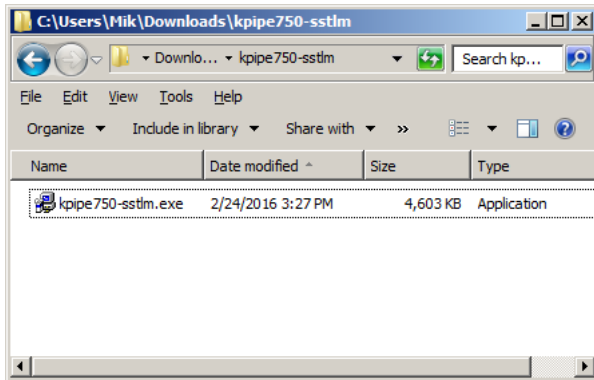
### B-3. Install CAEPIPE LM on both the server and each client machine

DO NOT INSTALL SST LICENSE MANAGER ON ANY CLIENT MACHINES.

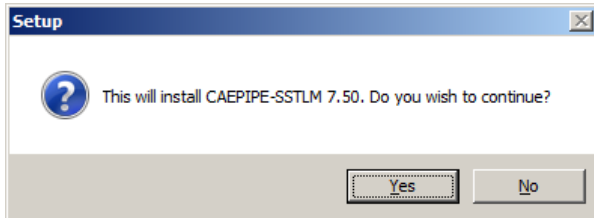
1. For CAEPIPE LM installation, refer to the download link provided by email (**kpipe750-sstlm.zip**).
2. Once CAEPIPE LM is downloaded, you should have a file that looks like the .zip file in the example below..



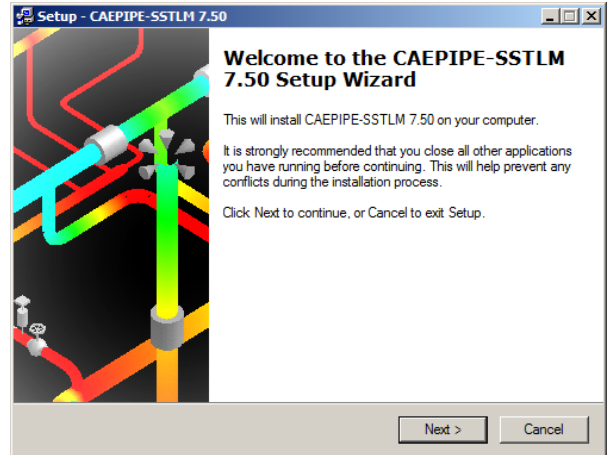
3. Unzip the “**kpipe750-sstlm.zip**” file that you downloaded and from within the new folder click the  **kpipe750-sstlm.exe** icon to start the installer.



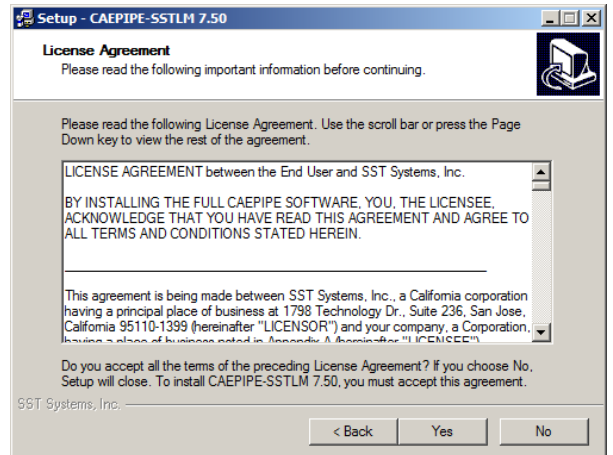
4. The dialog window below should appear. Click Yes to proceed.



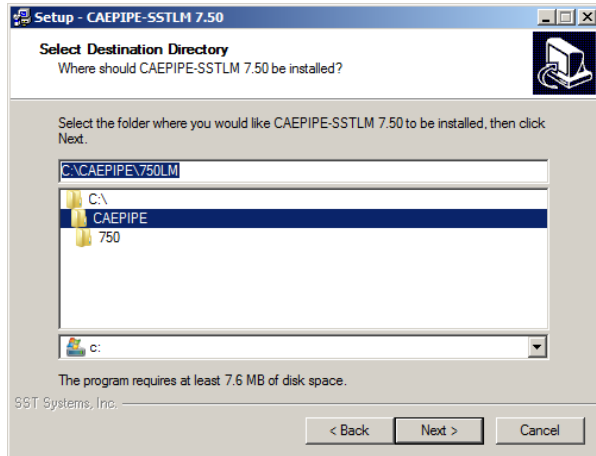
5. The dialogue box below should appear. Click Next to start the installation.



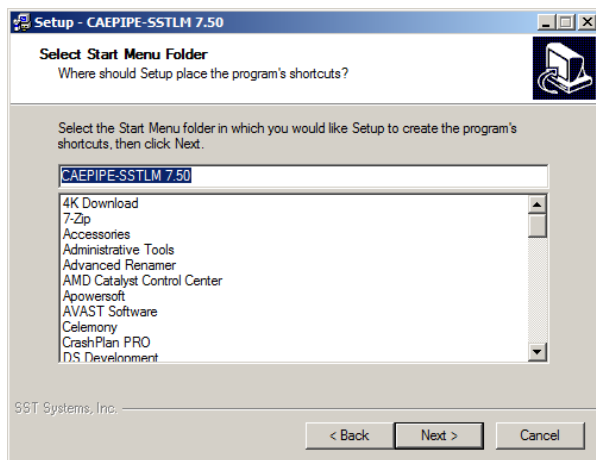
6. Click Yes to accept the license agreement and proceed with installation.



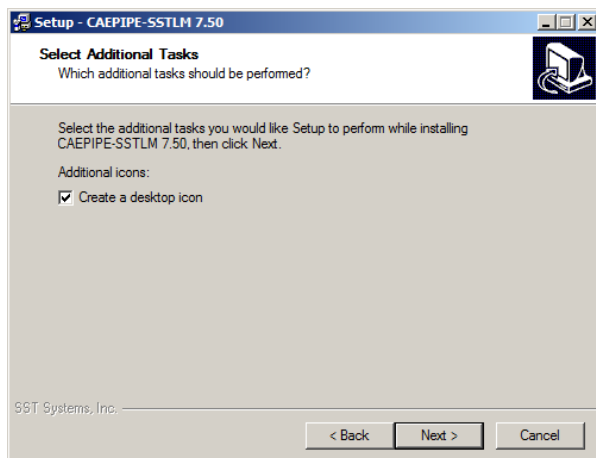
7. Click Next to select default installation folder shown.



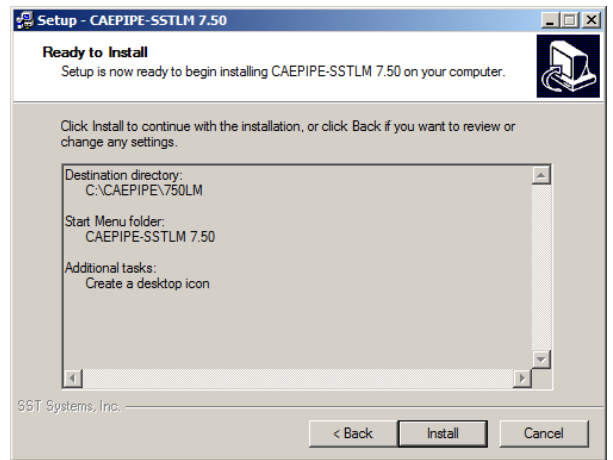
8. Click Next to select default Start Menu folder shown.



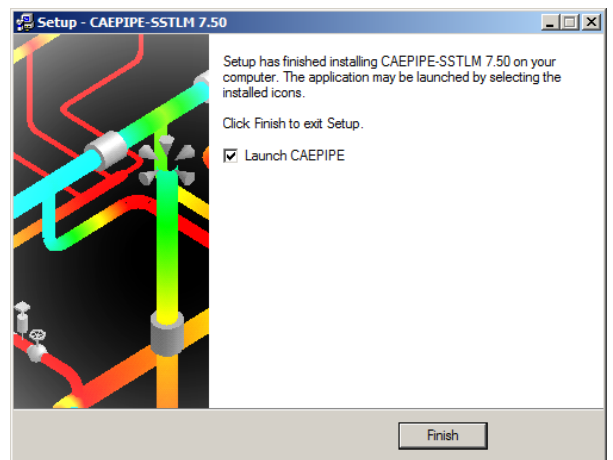
9. Click Next to accept default task to create a desktop icon.



10. Click Install to start the install process.



11. Click the Finish button to finalize installation and open CAEPIPE LM.



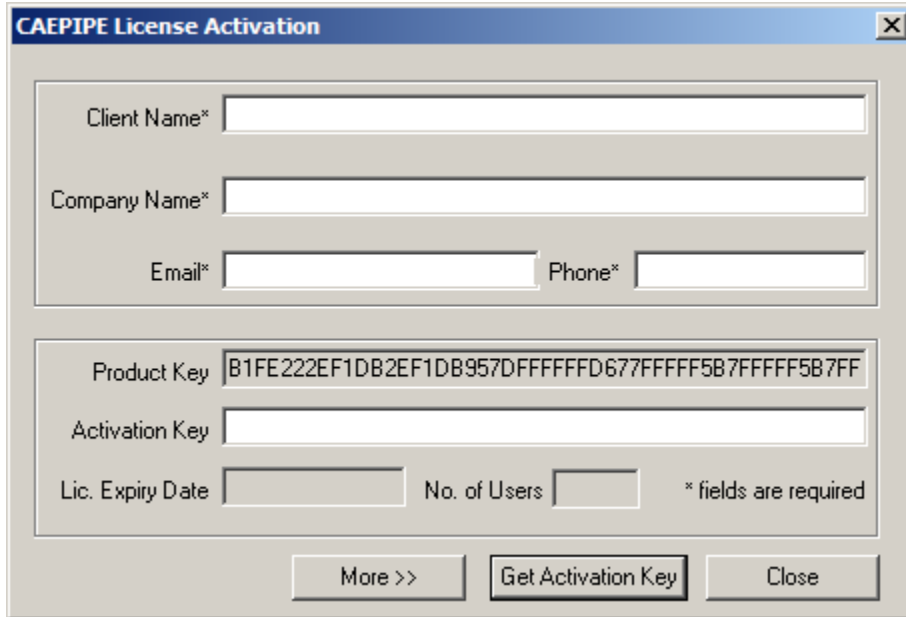
12. After CAEPIPE LM is installed on the server and all client machines, proceed to the activation process.

NOTE: Each CAEPIPE LM installation might open an activation dialog box. Close each one and repeat "Install CAEPIPE LM" for each machine both the server and the client machines.

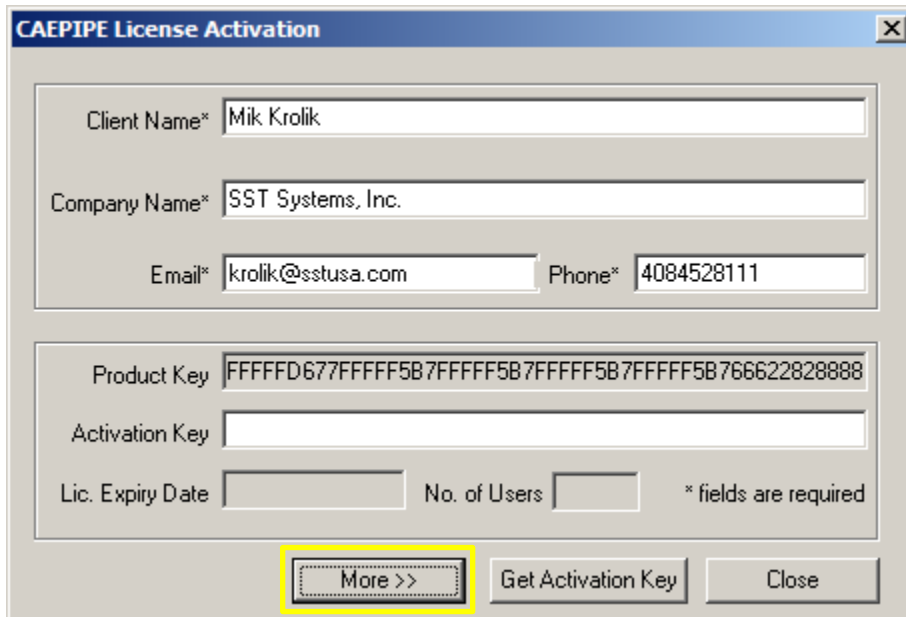
## B-4. Requesting Activation Key of CAEPIPE LM – One Time

Product key generation and activation key request (by email) only needs to be **DONE ONE TIME**. See instructions below.

- If CAEPIPE LM is not open, run/open the installed CAEPIPE LM from your Windows Start menu or installation directory. When you start the CAEPIPE LM, an activation dialog box will open. (An example, “CAEPIPE LM” Activation dialog is shown below.)



- Fill out the client information portion at the top of the dialog box. (An example is shown below.)
- Email your request for an Activation Key by clicking on the “More” button and then “Send email” button. Optionally, you may also copy and paste the ENTIRE product key (which is longer than the width of the visible Product Key field) into an email and send it to [support@sstusa.com](mailto:support@sstusa.com). If you are located in **India**, please email your information to [sales@sstindia.co.in](mailto:sales@sstindia.co.in).



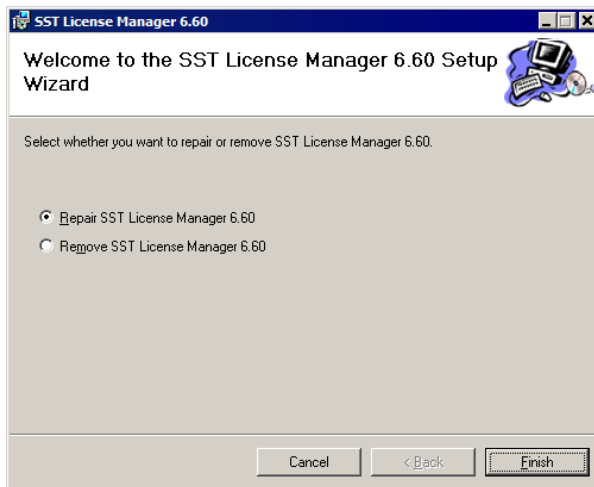
- **You will receive an Activation Key by email** to the email address entered in the client information area.
- Once the Activation Key from SST is received, launch the CAEPIPE LM again ON EACH MACHINE and copy the **ENTIRE** Activation Key into the Activation Key field and click on "Activate Now" ON EACH MACHINE (see below).
- Click Close. This completes the activation process on each machine and provides full functionality of the software on this machine.

## Section C: Troubleshooting

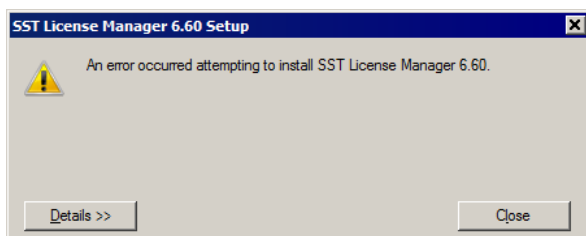
- If you get a ".NET Framework not installed" message, or if you run into any other problems not covered by these instructions, then please visit our website for a list of troubleshooting solutions and downloads:

<http://www.sstusa.com/universal-troubleshooting.php>

- If SST License Manager software is already installed on your machine, the dialog windows shown below will appear instead of the the one mentioned above.



Upon clicking the Cancel button from the first dialog window an error message window will appear.



## Section D: User's Manual

[View or download the CAEPIPE User's Manual by clicking anywhere on this sentence.](#)